

GALPON COLON

Buenos Aires 2004 - 2005

© gian paolo minelli

Edizione: 5 / 3 / 2 copie numerate + 2 PdA
Edition: 5 / 3 / 2 numbered copies + 2 A.P.
Inkjet print pigmentaries Fine Art and C Print

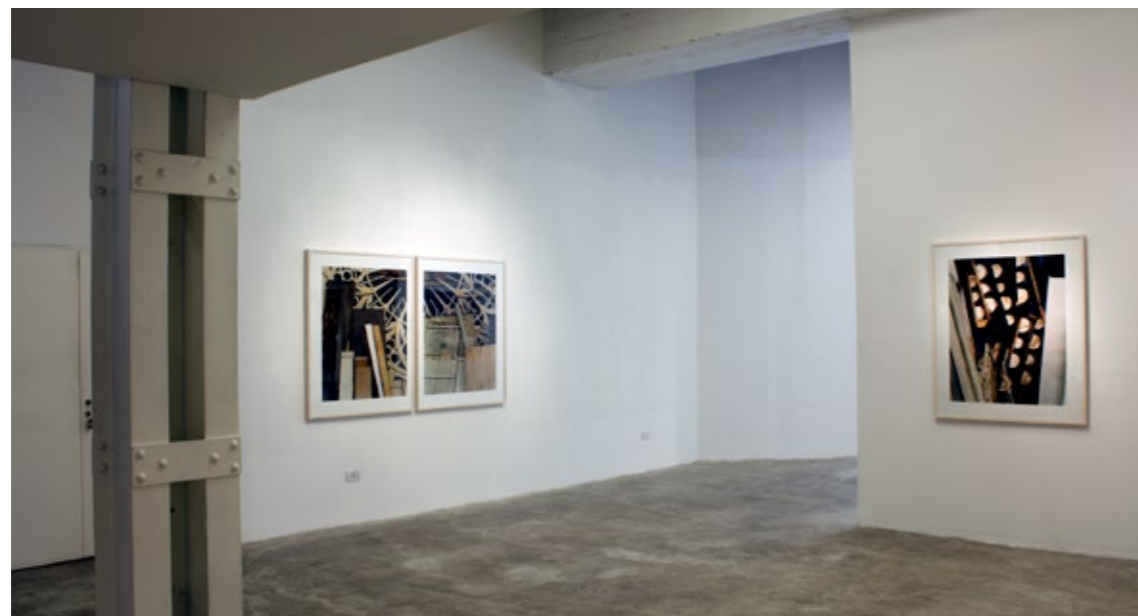
+ Portfolio con 10 stampe 40/50 cm. edizione di 7 copie numerate
+ Portfolio with 10 prints 40/50 cm. edition of 7 numbered copies



**[...] fragmento texto de Florencia Malbrán, Vacío – Vuoto
Exposición Galería Zavaleta Lab, Buenos Aires 2009**

En Galpón Colón, el segundo ensayo fotográfico, Minelli retrata las escenografías sin uso que el Teatro Colón deposita en un galpón de la zona sur de Buenos Aires. Se trata de decorados vaciados de su función, porque ahora están fuera de escena y ya no prestan auxilio en representación lírica alguna. Allí, acumulados en aquel depósito, conviven elementos sobre los que es difícil decir qué son, o mejor, qué fueron. Las fotografías de Minelli ofrecen consuelo a ese desencanto, construyendo con los decorados desechados una secuencia de dramáticas geometrías. Hay puertas y muebles que forman vías y caminos. Hay también varillas que ofrecen puntos de fuga vertiginosos. Por un lado, la balastrada de un balcón se las ha ingeniado para permanecer suspendida. Por otro, un árbol de utilería todavía se mantiene en pie y extiende lejos sus ramas. Los restos de las gradas en las que alguna vez se ubicó una orquesta trazan curvas y flechas, e incluso simulan la ondulada silueta de un violonchelo.

Minelli busca retener estos elementos, impedir que se salgan de la escena, que se muevan, se eliminen, pierdan en la espera del depósito. Más que presentar materiales y estructuras diferentes, cada una de sus fotos abre una ventana al ambiente enrarecido del galpón. En ese lugar, a través de las fotos, los decorados desplazados, o los que quedaron entre bambalinas, regresan al centro de las tablas. Nuevamente Minelli habla del pasado y su actualidad. Como ocurre en Playas, Galpón Colón gira en torno al vacío que deja aquello que se va. Minelli lamenta ese hueco, pero lo recupera también como una especie de mirilla por la cual observar el pasaje del tiempo. En sus fotografías, el vacío es la apertura que permite ver el hoy.



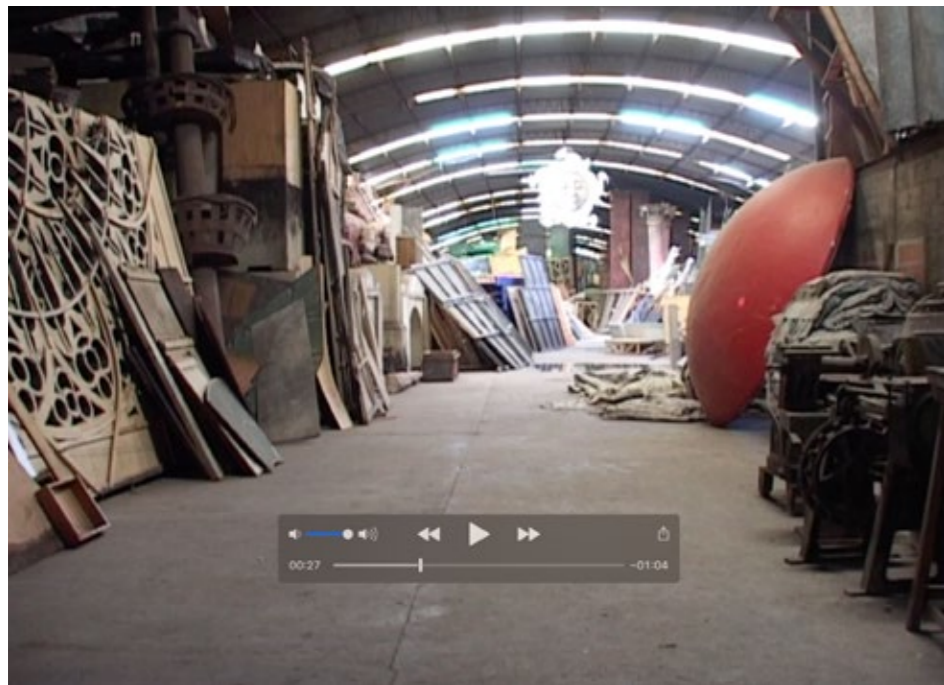
**GALPON COLON, BUENOS AIRES
John Weeden, Memphis 2005
exhibition Groeflin Maag Gallery, Basel 2005**

Minelli's most recent series, GALPON COLON, consists of images taken in the Barrio Piedra Buena, one of the most impoverished areas of Buenos Aires, a district long plagued by drugs and violent crime. Fascinated by the way of life in that part of the city, Minelli first visited this same barrio for his series entitled "Zona Sur". These portraits of young people of the neighbourhood are friends whom Minelli first came to know before ever proposing to take their pictures. It was in this manner that he was able to gain access to intimate social moments of the community never exposed to outsiders. In achieving his subjects' trust Minelli was able to reveal a world to which audiences would never have been given entry otherwise. His is the privileged eye able to give witness to the spirit of a closed society.

In GALPON COLON viewers are given access to the storage room for stage props of Buenos Aires' Colon Theatre in the middle of the Barrio Piedra Buena. The pictures mediate a quiet that is deceitful, in view of the turmoil on the streets and in the houses of the quarter. The photographer and the spectator are alone with the stage furniture and scaffolding, as if waiting out a storm in a sheltered harbour. Minelli photographs his subjects as they are, without posturing the subject or fashioning the final print, and yet he still manages to capture images that are incredibly elegant. However, if the picture was only displaying surface beauty, Minelli insists that "the goal of my work would be missed." The misery of daily existence in the area is absent in the Colon prop room, replaced with an underlying serenity brought about by the shapes, lines, textures, colours, and light of the space. Almost abstract in their patterns, Minelli's images contribute another layer of perspective upon the life of the Barrio Piedra Buena.

Gian Paolo Minelli's GALPON COLON strikes a unique balance between a calming fascination with the aesthetic details of geometric abstraction and an uneasy awareness of the dark reality just beyond the stage door.





GALPON COLON_ Buenos Aires 2004

video poema 2004

mini DV, 01:31

with Luciano's collaboration

© gian paolo minelli



GALPON COLON_ Buenos Aires 2004
#001_2004

edition 5 + 2 A.P.
Fine Art Inkjetprint ultraChrome
Cellulose Hahnemühle Pearl 285 g/m2

100x120 cm. / 60x70 cm.

© gian paolo minelli



GALPON COLON_ Buenos Aires 2004
#003_2004

edition 5 + 2 A.P.
Fine Art Inkjetprint ultraChrome
Cellulose Hahnemühle Pearl 285 g/m2

100x120 cm. / 60x70 cm.

© gian paolo minelli



GALPON COLON_ Buenos Aires 2004
#019_2005

edition 5 + 2 A.P.
Fine Art Inkjetprint ultraChrome
Cellulose Hahnemühle Pearl 285 g/m2

100x120 cm. / 60x70 cm.

© gian paolo minelli

GALPON COLON_ Buenos Aires 2004
#002_2004

edition 5 + 2 A.P.
Fine Art Inkjetprint ultraChrome
Cellulose Hahnemühle Pearl 285 g/m2

100x120 cm. / 60x70 cm.

© gian paolo minelli





GALPON COLON_ Buenos Aires 2004
#023_2005

edition 5 + 2 A.P.
Fine Art Inkjetprint ultraChrome
Cellulose Hahnemühle Pearl 285 g/m2

100x120 cm. / 60x70 cm.

© gian paolo minelli



GALPON COLON_ Buenos Aires 2004
#004_2004

edition 5 + 2 A.P.
Fine Art Inkjetprint ultraChrome
Cellulose Hahnemühle Pearl 285 g/m2

100x120 cm. / 60x70 cm.

© gian paolo minelli



GALPON COLON_ Buenos Aires 2004
#006_2004

edition 3 + 2 A.P.
Fine Art Inkjetprint ultraChrome
Cellulose Hahnemühle Pearl 285 g/m2

100x120 cm. / 60x70 cm.

© gian paolo minelli

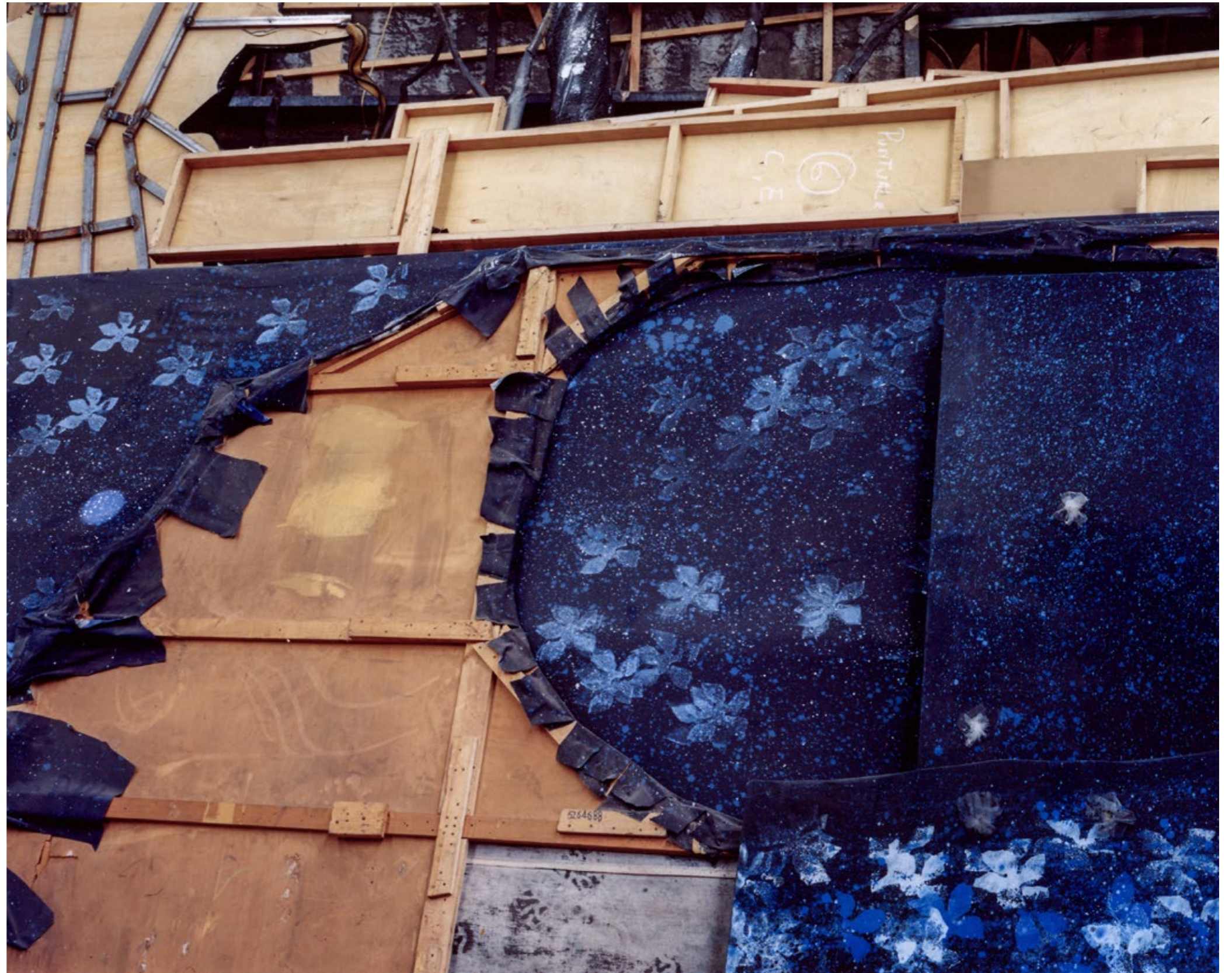


GALPON COLON_ Buenos Aires 2004
#007_2004

edition 5 + 2 A.P.
Fine Art Inkjetprint ultraChrome
Cellulose Hahnemühle Pearl 285 g/m2

100x120 cm. / 60x70 cm.

© gian paolo minelli



GALPON COLON_ Buenos Aires 2004
#008_2004

edition 3 + 2 A.P.
Fine Art Inkjetprint ultraChrome
Cellulose Hahnemühle Pearl 285 g/m2

100x120 cm. / 60x70 cm.

© gian paolo minelli

GALPON COLON_ Buenos Aires 2004
#033_2005

edition 3 + 2 A.P.
Fine Art Inkjetprint ultraChrome
Cellulose Hahnemühle Pearl 285 g/m2

120x100 cm. / 70x60 cm.

© gian paolo minelli





GALPON COLON_ Buenos Aires 2004
#009_2004

edition 3 + 2 A.P.
Fine Art Inkjetprint ultraChrome
Cellulose Hahnemühle Pearl 285 g/m2

100x120 cm. / 60x70 cm.

© gian paolo minelli

GALPON COLON_ Buenos Aires 2004
#017_2005

edition 5 + 2 A.P.
Fine Art Inkjetprint ultraChrome
Cellulose Hahnemühle Pearl 285 g/m2

120x100 cm. / 70x60 cm.

© gian paolo minelli



GALPON COLON_ Buenos Aires 2004
#012_2004

edition 5 + 2 A.P.
Fine Art Inkjetprint ultraChrome
Cellulose Hahnemühle Pearl 285 g/m2

100x120 cm. / 60x70 cm.

© gian paolo minelli



GALPON COLON_ Buenos Aires 2004
#015_2004

edition 5 + 2 A.P.
Fine Art Inkjetprint ultraChrome
Cellulose Hahnemühle Pearl 285 g/m2

100x120 cm. / 60x70 cm.

© gian paolo minelli



GALPON COLON_ Buenos Aires 2004
#030 + #030A_2005

edition 5 + 2 A.P.
Fine Art Inkjetprint ultraChrome
Cellulose Hahnemühle Pearl 285 g/m2

120x100 cm. / 70x60 cm.

© gian paolo minelli

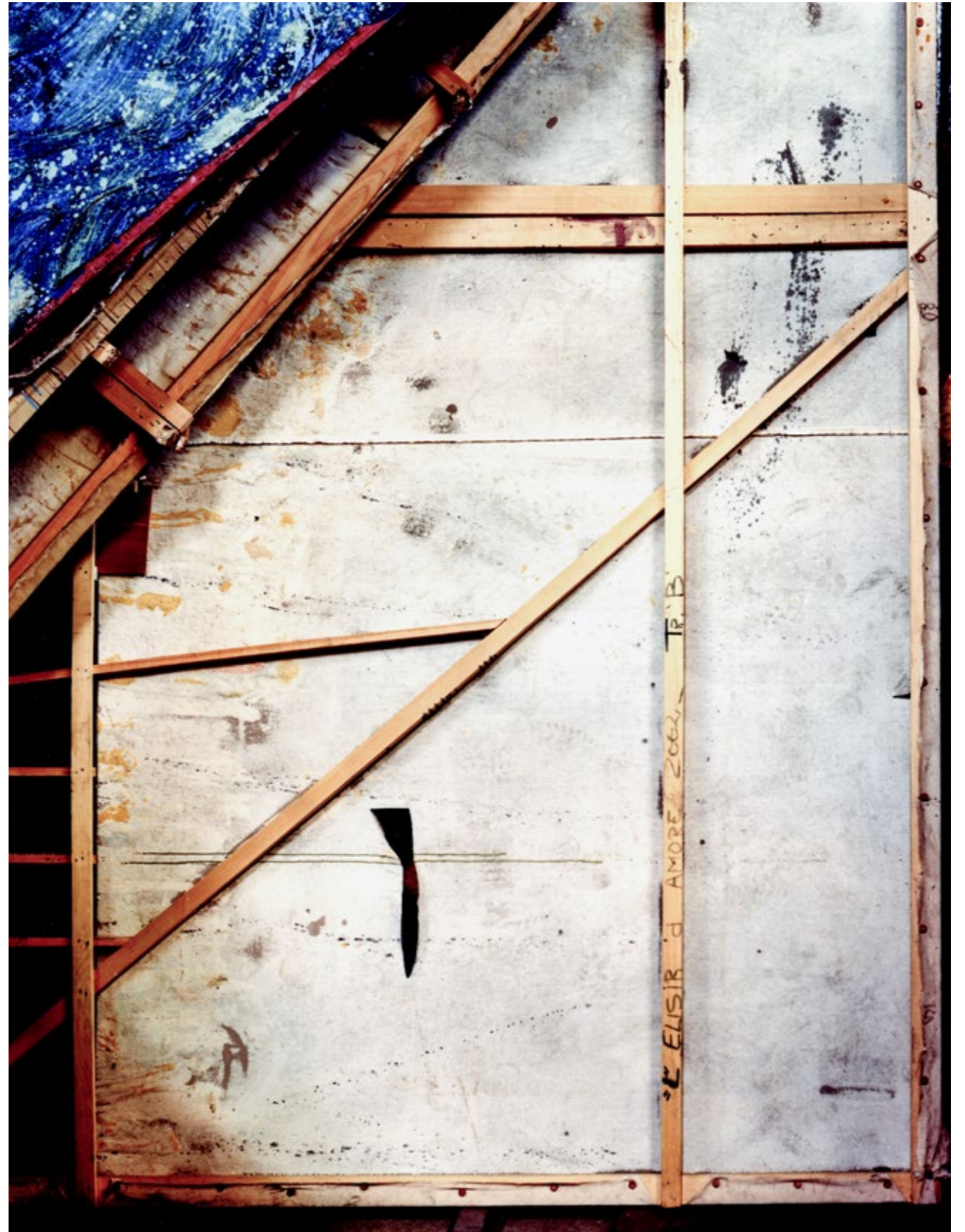


GALPON COLON_ Buenos Aires 2004
#020_2005

edition 2 + 2 A.P.
Fine Art Inkjetprint ultraChrome
Cellulose Hahnemühle Pearl 285 g/m2

120x100 cm. / 70x60 cm.

© gian paolo minelli





GALPON COLON_ Buenos Aires 2004
#016_2005

edition 5 + 2 A.P.
Fine Art Inkjetprint ultraChrome
Cellulose Hahnemühle Pearl 285 g/m2

100x120 cm. / 60x70 cm.

© gian paolo minelli

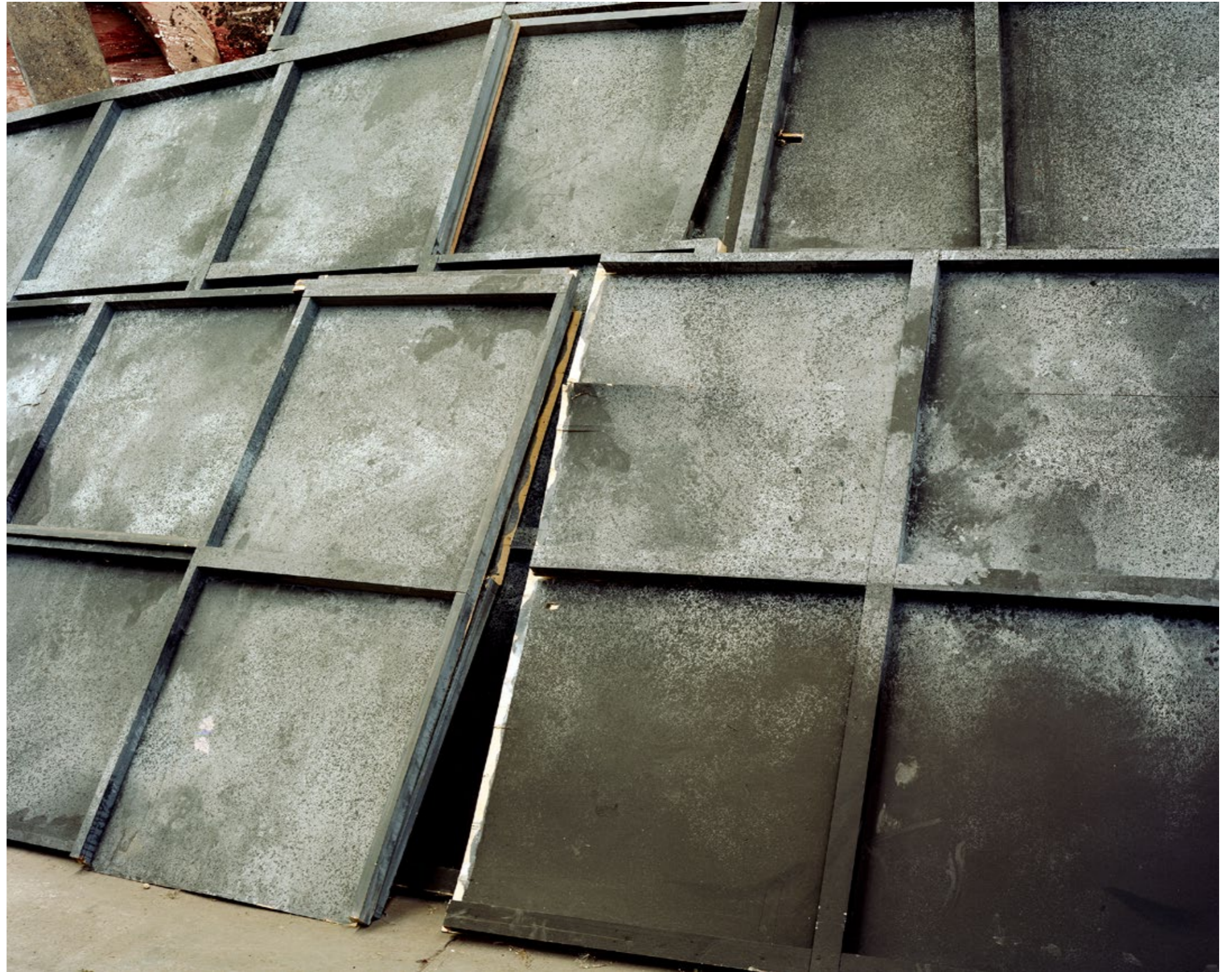
GALPON COLON_ Buenos Aires 2004
#032_2005

edition 2 + 2 A.P.
Fine Art Inkjetprint ultraChrome
Cellulose Hahnemühle Pearl 285 g/m2

100x120 cm. / 60x70 cm.

© gian paolo minelli





GALPON COLON_ Buenos Aires 2004
#022_2005

edition 2 + 2 A.P.
Fine Art Inkjetprint ultraChrome
Cellulose Hahnemühle Pearl 285 g/m2

100x120 cm. / 60x70 cm.

© gian paolo minelli

GALPON COLON_ Buenos Aires 2004
#035_2005

edition 3 + 2 A.P.
Fine Art Inkjetprint ultraChrome
Cellulose Hahnemühle Pearl 285 g/m2

120x100 cm. / 70x60 cm.

© gian paolo minelli



GALPON COLON_ Buenos Aires 2004
#036_2005

edition 5 + 2 A.P.
Fine Art Inkjetprint ultraChrome
Cellulose Hahnemühle Pearl 285 g/m2

120x100 cm. / 70x60 cm.

© gian paolo minelli





GALPON COLON_ Buenos Aires 2004
#029_2005

edition 2 + 2 A.P.
Fine Art Inkjetprint ultraChrome
Cellulose Hahnemühle Pearl 285 g/m2

100x120 cm. / 60x70 cm.

© gian paolo minelli

GALPON COLON_ Buenos Aires 2004
#038_2005

edition 3 + 2 A.P.
Fine Art Inkjetprint ultraChrome
Cellulose Hahnemühle Pearl 285 g/m2

120x100 cm. / 70x60 cm.

© gian paolo minelli



GALPON COLON_ Buenos Aires 2004
#042_2005

edition 2 + 2 A.P.
Fine Art Inkjetprint ultraChrome
Cellulose Hahnemühle Pearl 285 g/m2

120x100 cm. / 70x60 cm.

© gian paolo minelli



GALPON COLON_ Buenos Aires 2004
#034_2005

edition 3 + 2 A.P.
Fine Art Inkjetprint ultraChrome
Cellulose Hahnemühle Pearl 285 g/m2

120x100 cm. / 70x60 cm..

© gian paolo minelli



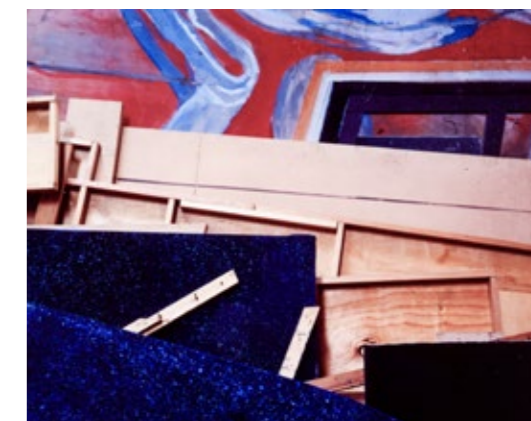
GALPON COLON_ Buenos Aires 2004
#027_2005

edition 3 + 2 A.P.
Fine Art Inkjetprint ultraChrome
Cellulose Hahnemühle Pearl 285 g/m2

100x120 cm. / 60x70 cm.

© gian paolo minelli





GALPON COLON_ Buenos Aires 2004 - 2005

Il portfolio contiene 10 fotografie 40/50 cm. montate in passepartout 50/60 cm.
Inkjetprint ultraChrome K3 Hahnmuhle FineArt Baryta
edizione di 7

The portfolio contains 10 photographs 40/50 cm. mounted in 50/60 cm passepartout.
Inkjetprint ultraChrome K3 Hahnmuhle FineArt Baryta
edition of 7